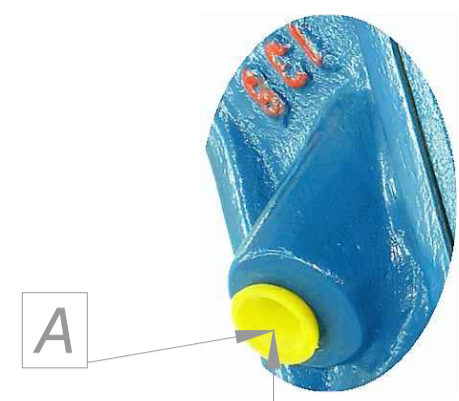
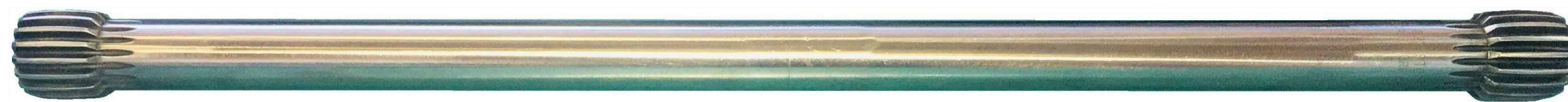


Ana Şanzıman Modeli

SCANIA GRS 895

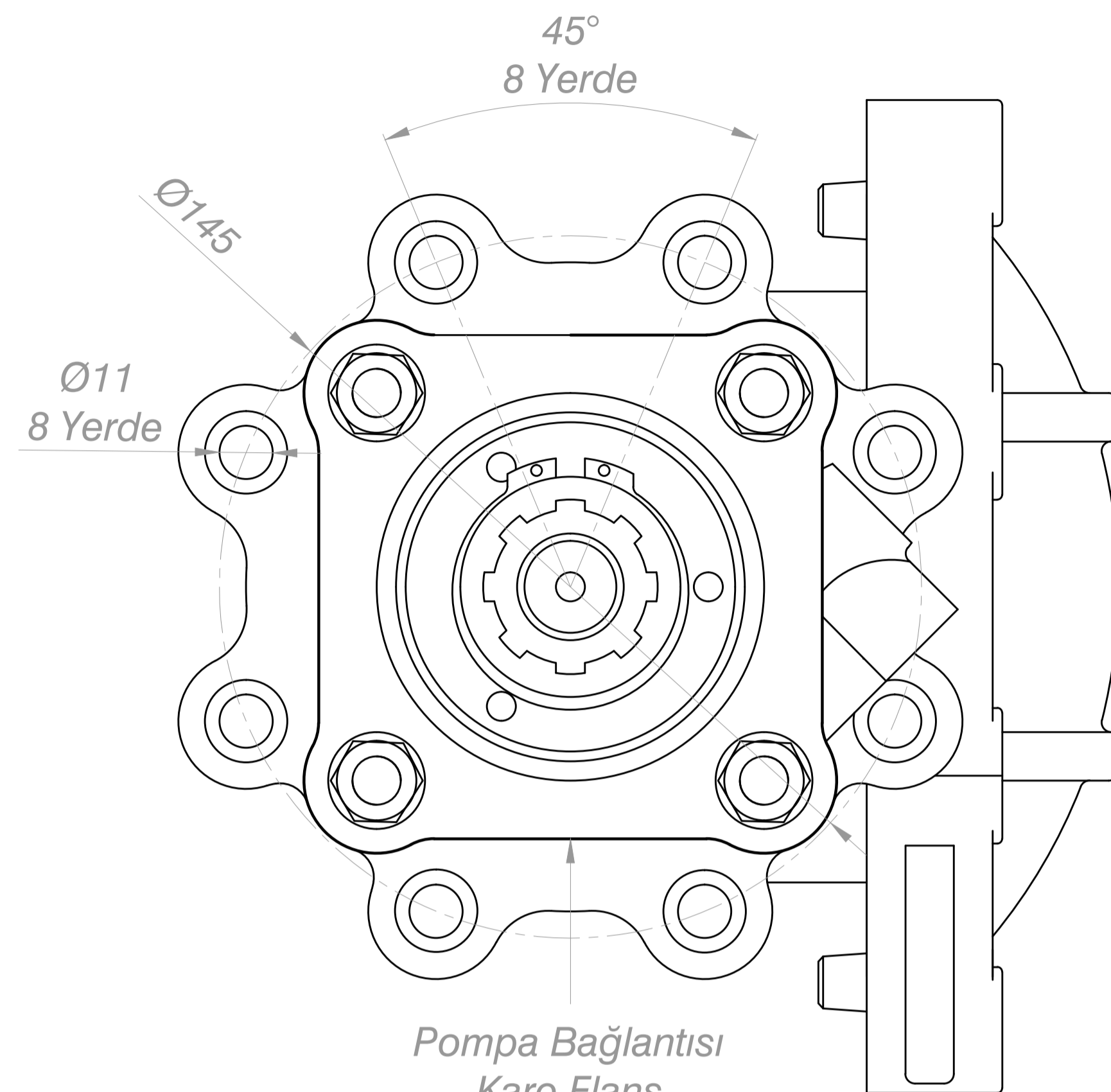
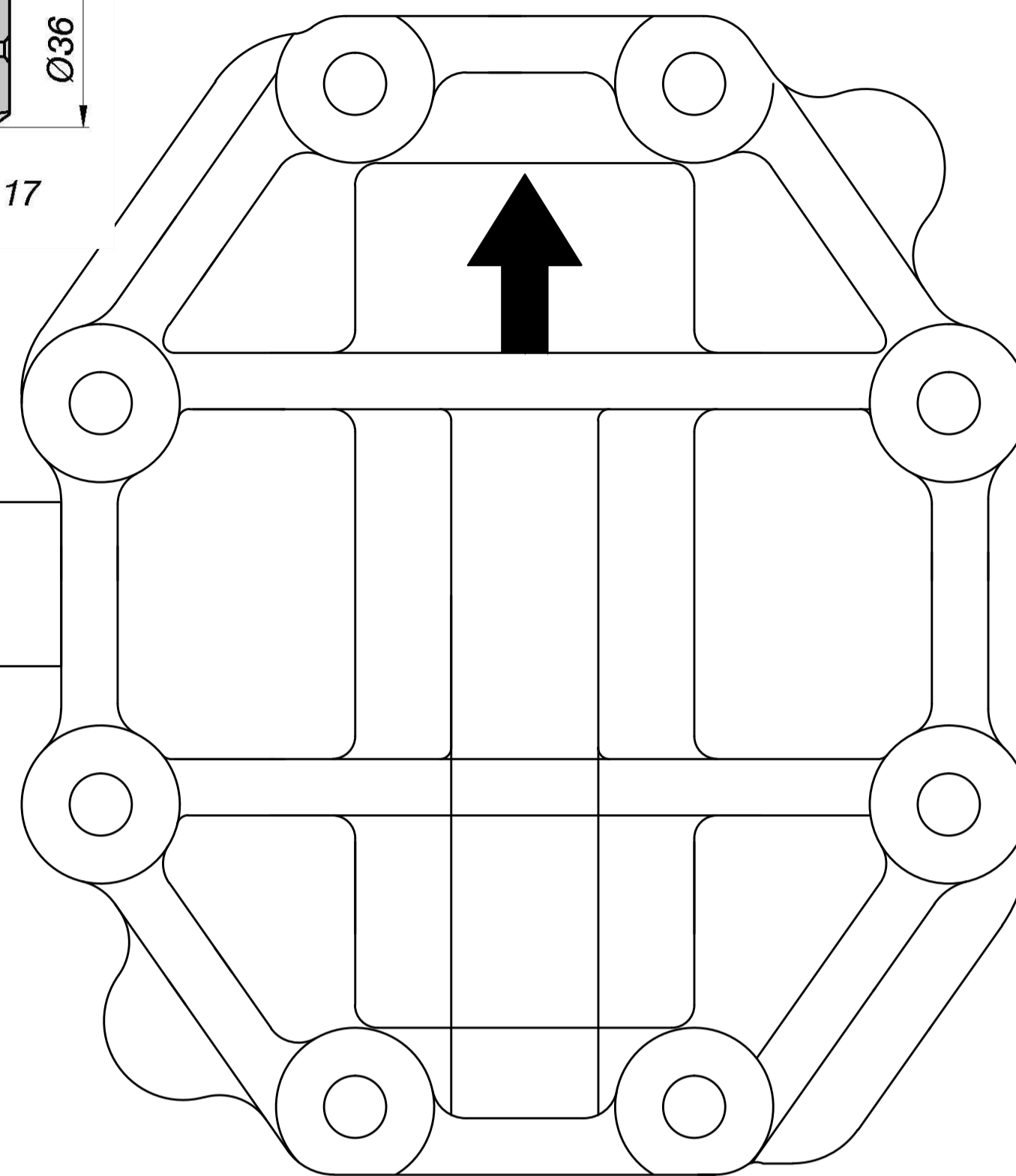


Hava Girişi
R 1/4



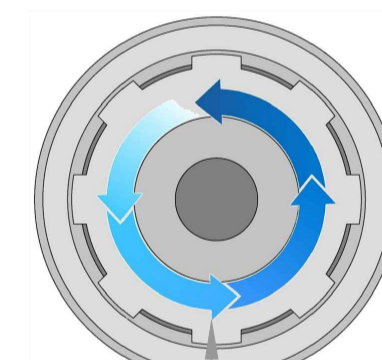
K345A022
Kardan Mili

K



Pompa Bağlantısı
Kare Flaş
Tip PTO

2

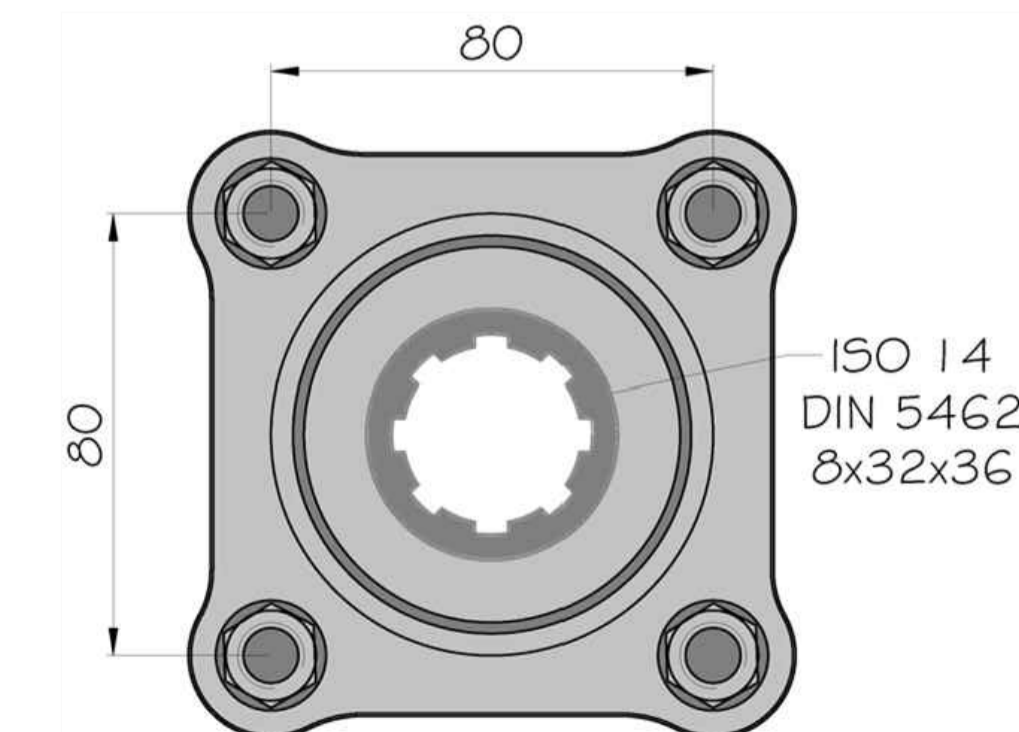
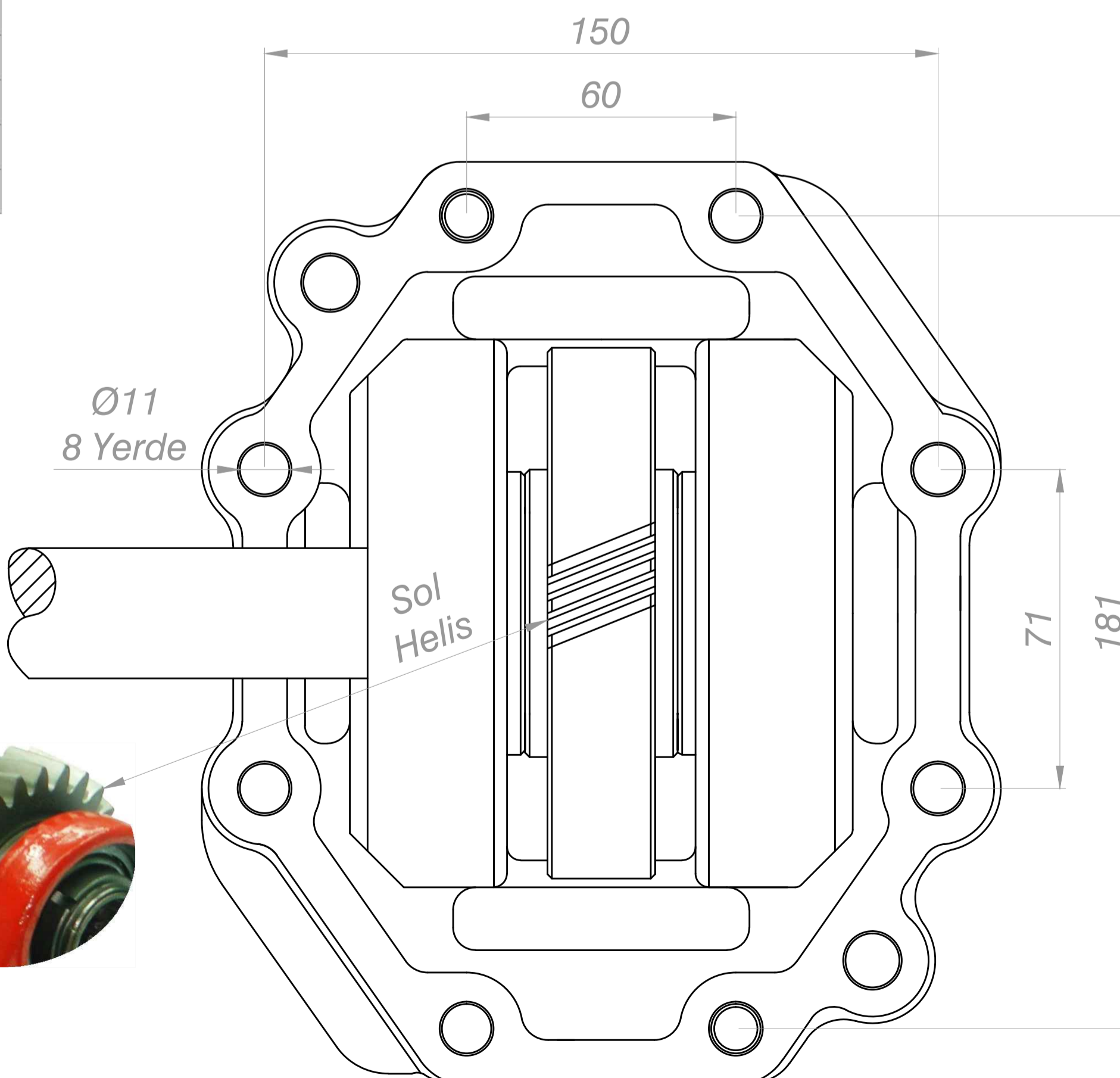


PTO Mil Dönüş Yönü
Sola
(Saatin Aksı Yönü)

Pto Kodu	345AC2F
Dişli Tipi	Helis
Pto Tipi	Çift PTO
Tork Nm	400
Güç Kw	36
Tahvil Oranı	1/1.30
Bağlantı Yeri	Sağ Yan ve Kuyruktan
Kontrol Sistemi	Havalı
Pto Mil Dönüş Yönü	Sola
Ağırlık Kg.	21,00



PTO Bağlantı Yeri
Aracın Arka Tarafı
(Kuyruktan)



ISO 14
DIN 5462
8x32x36

Ürün Kodu	3 4 5 A C 2 F
3	Kardan Millii
4	Kare Flaşlı / ISO 14 / DIN 5462 / 8x32x36
5	Akuple
A	Havalı
C	Havalı
2	Havalı
F	Sıra No

